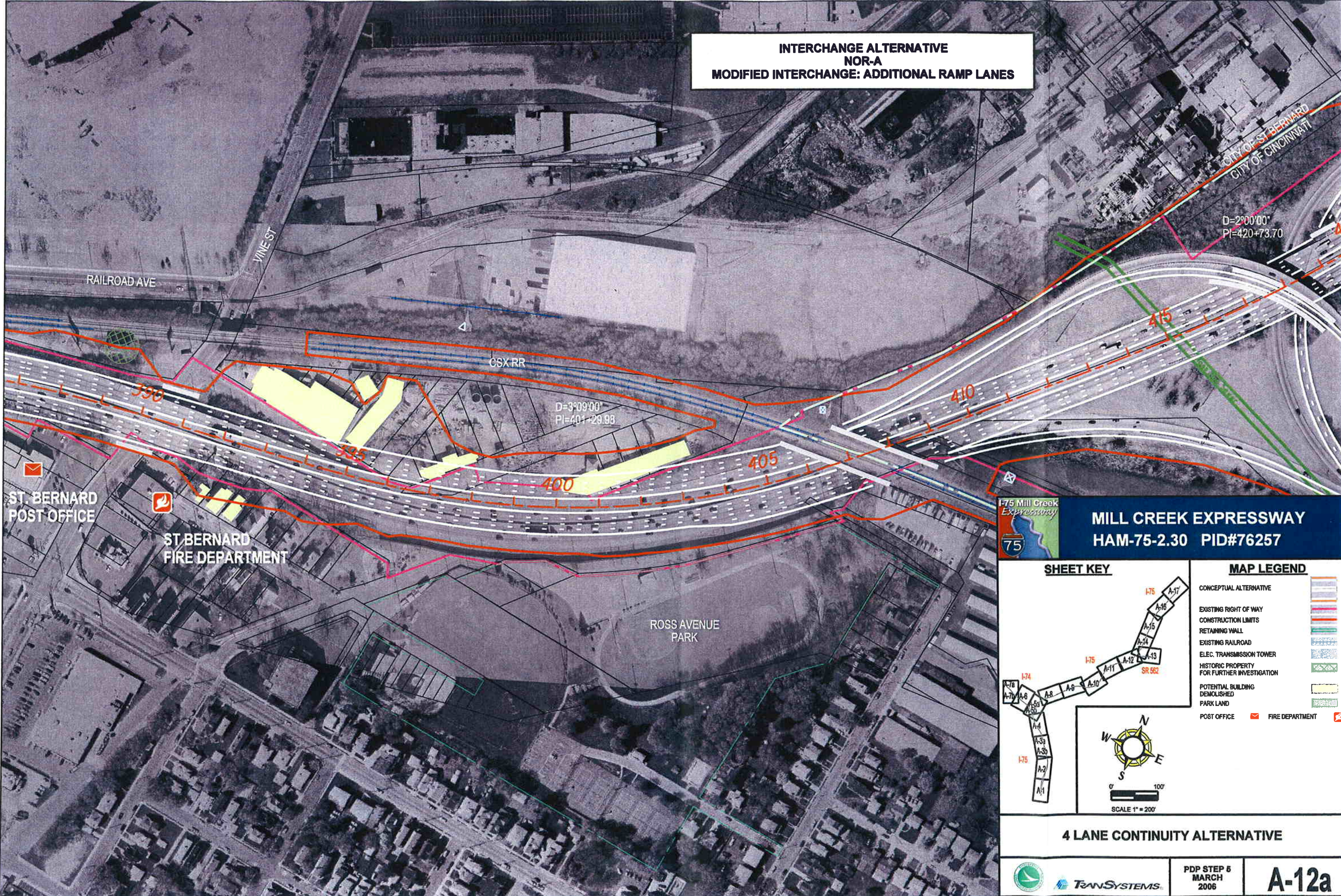
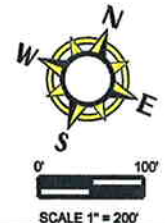
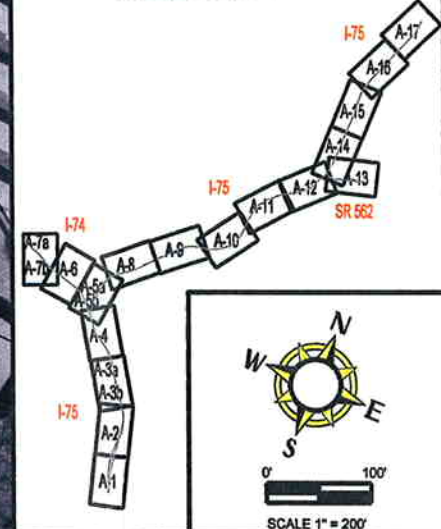


**INTERCHANGE ALTERNATIVE
NOR-A
MODIFIED INTERCHANGE: ADDITIONAL RAMP LANES**



**MILL CREEK EXPRESSWAY
HAM-75-2.30 PID#76257**

SHEET KEY



MAP LEGEND

- CONCEPTUAL ALTERNATIVE
- EXISTING RIGHT OF WAY
- CONSTRUCTION LIMITS
- RETAINING WALL
- EXISTING RAILROAD
- ELEC. TRANSMISSION TOWER
- HISTORIC PROPERTY FOR FURTHER INVESTIGATION
- POTENTIAL BUILDING DEMOLISHED
- PARK LAND
- POST OFFICE
- FIRE DEPARTMENT

4 LANE CONTINUITY ALTERNATIVE



TRANSYSTEMS

**PDP STEP 6
MARCH
2006**

A-12a