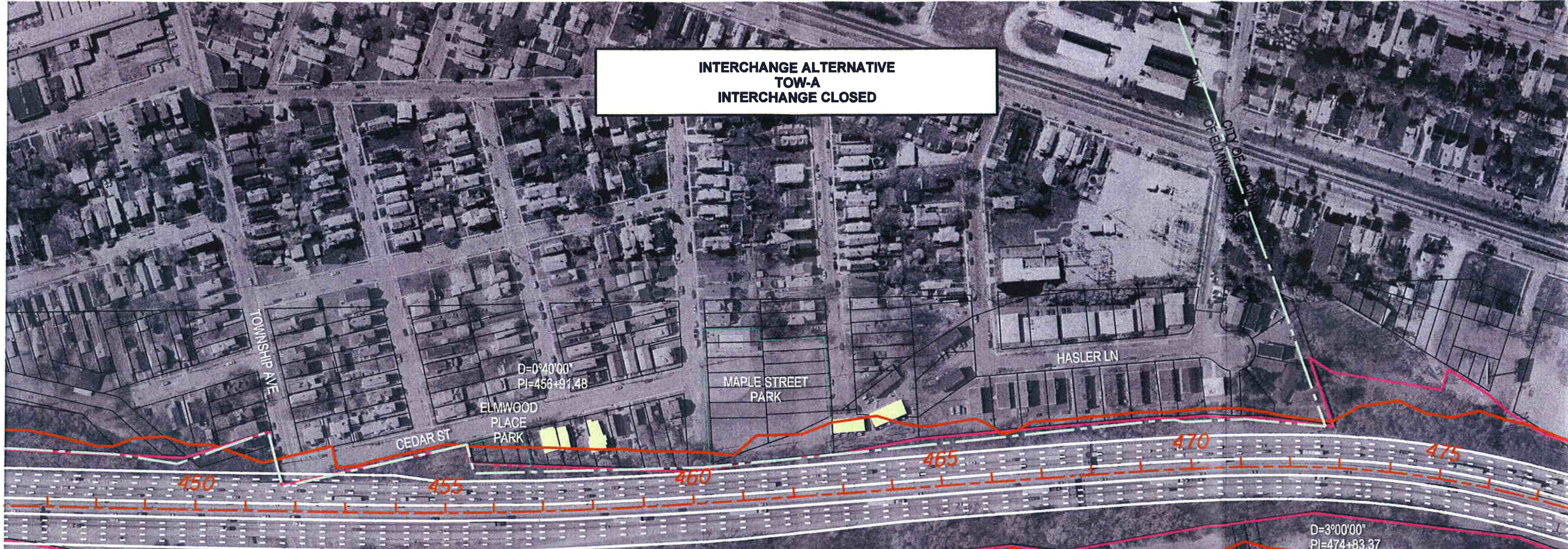


**INTERCHANGE ALTERNATIVE  
TOW-A  
INTERCHANGE CLOSED**



**MILL CREEK EXPRESSWAY  
HAM-75-2.30 PID#76257**

**SHEET KEY**

**MAP LEGEND**

- CONCEPTUAL ALTERNATIVE
- EXISTING RIGHT OF WAY
- CONSTRUCTION LIMITS
- RETAINING WALL
- POTENTIAL BUILDING
- DEMOLISHED
- PARK LAND
- RAMP CLOSED

SCALE 1" = 200'

**4 LANE CONTINUITY ALTERNATIVE**