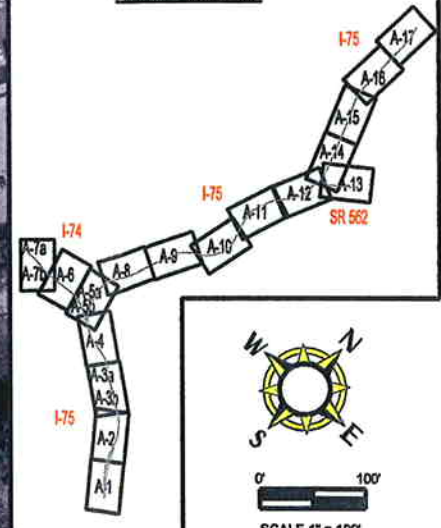


D=3°00'00"
PI=474+89.37



MILL CREEK EXPRESSWAY
HAM-75-2.30 PID#76257

SHEET KEY



MAP LEGEND

- CONCEPTUAL ALTERNATIVE
- EXISTING RIGHT OF WAY
- CONSTRUCTION LIMITS
- RETAINING WALL



0' 100'
SCALE 1" = 100'

4 LANE CONTINUITY ALTERNATIVE



T&W SYSTEMS

PDP STEP 5
MARCH
2006

A-16