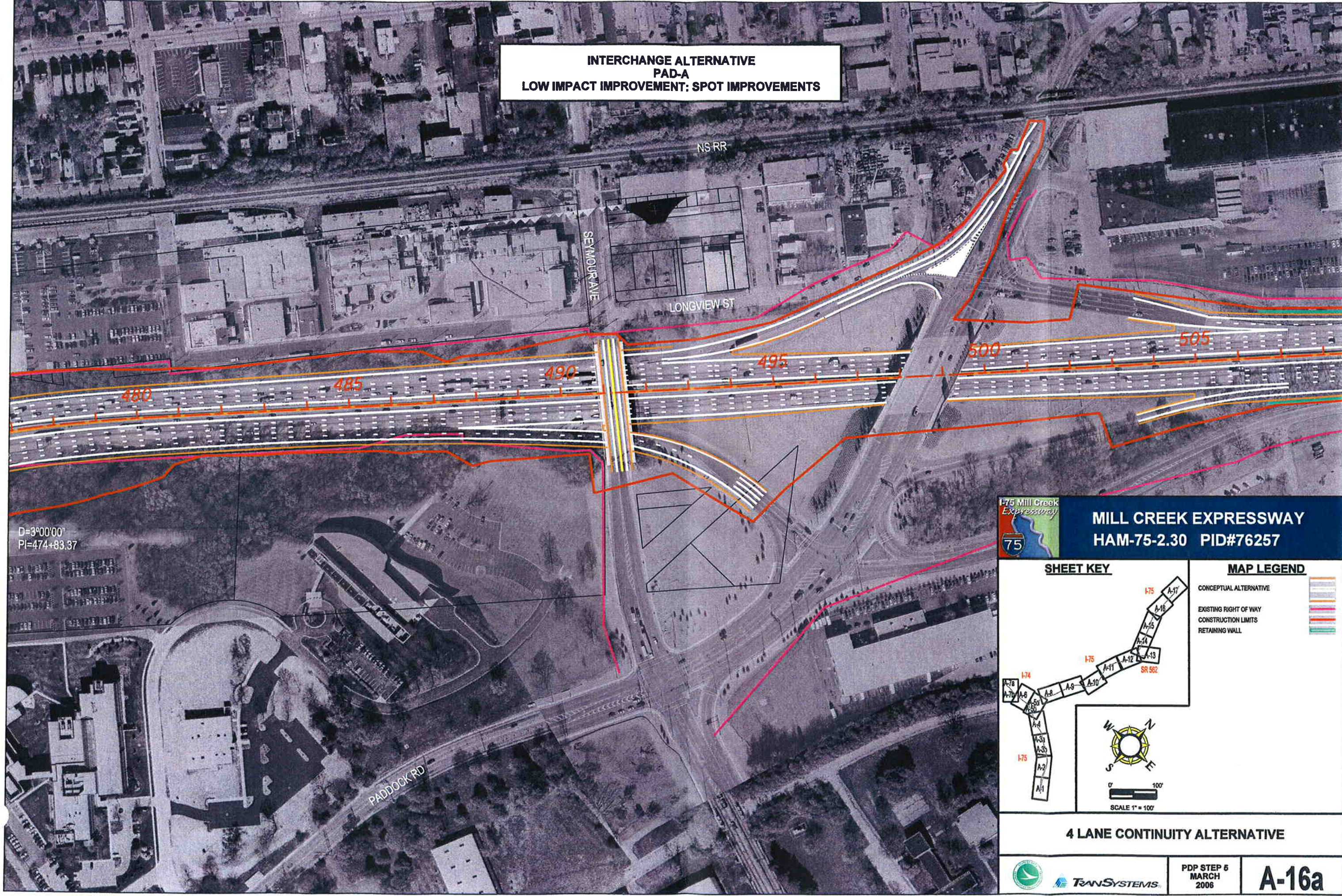


**INTERCHANGE ALTERNATIVE
PAD-A
LOW IMPACT IMPROVEMENT: SPOT IMPROVEMENTS**

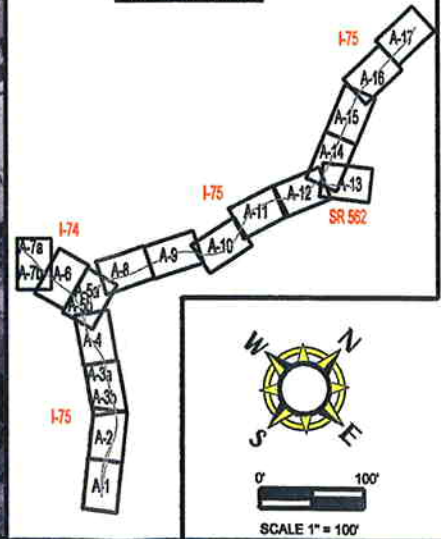


D=3°00'00"
PI=474+83.37



**MILL CREEK EXPRESSWAY
HAM-75-2.30 PID#76257**

SHEET KEY



MAP LEGEND

- CONCEPTUAL ALTERNATIVE
- EXISTING RIGHT OF WAY
- CONSTRUCTION LIMITS
- RETAINING WALL

4 LANE CONTINUITY ALTERNATIVE



TRANSYSTEMS

PDP STEP 5
MARCH
2006

A-16a