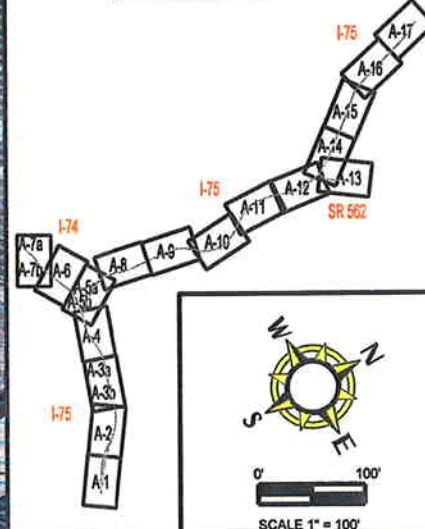




**MILL CREEK EXPRESSWAY
HAM-75-2.30 PID#76257**

SHEET KEY



MAP LEGEND

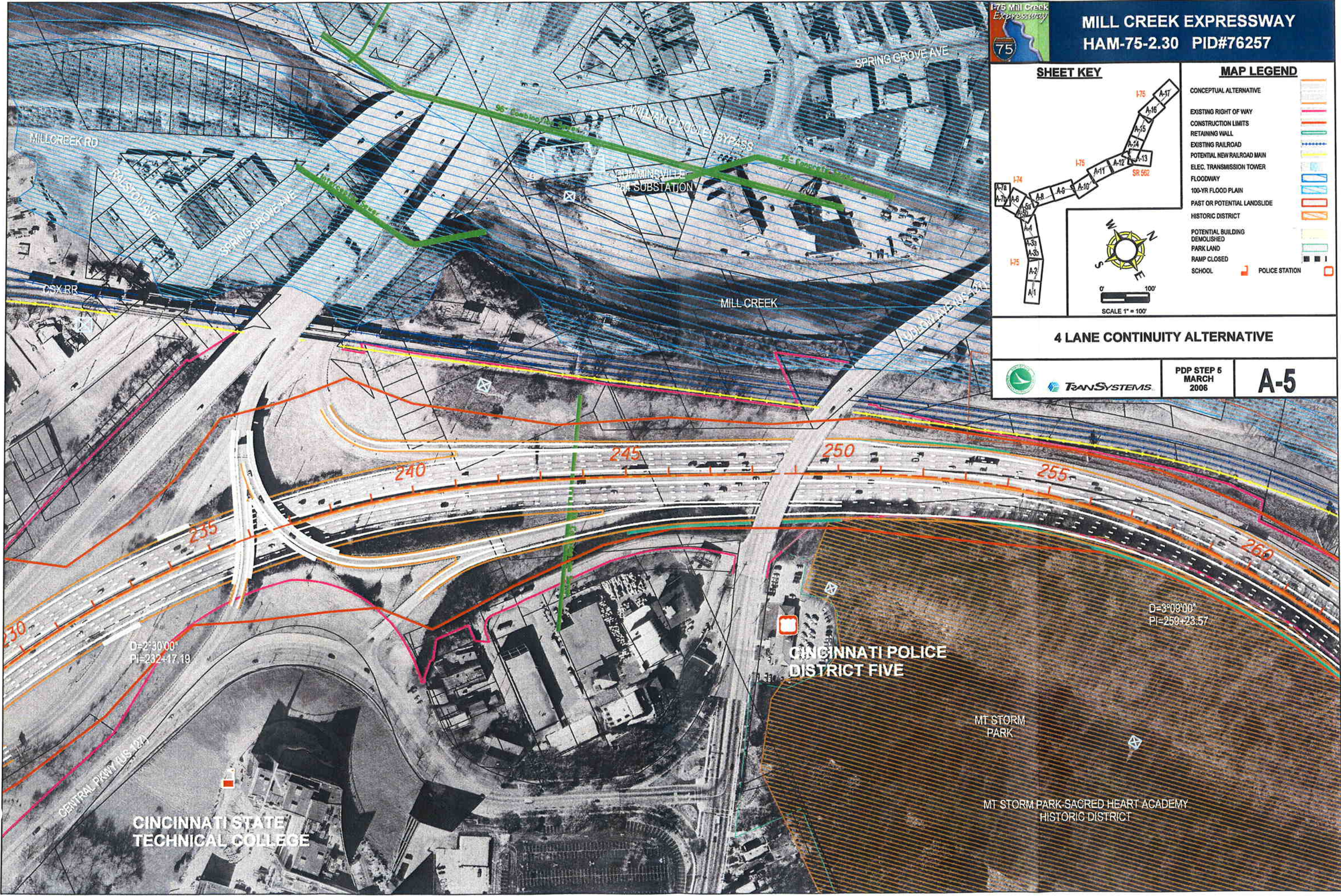
- CONCEPTUAL ALTERNATIVE
- EXISTING RIGHT OF WAY
- CONSTRUCTION LIMITS
- RETAINING WALL
- EXISTING RAILROAD
- POTENTIAL NEW RAILROAD MAIN
- ELEC. TRANSMISSION TOWER
- FLOODWAY
- 100-YR FLOOD PLAN
- PAST OR POTENTIAL LANDSLIDE
- HISTORIC DISTRICT
- POTENTIAL BUILDING DEMOLISHED
- PARK LAND
- RAMP CLOSED
- SCHOOL
- POLICE STATION

4 LANE CONTINUITY ALTERNATIVE



**PDP STEP 5
MARCH
2006**

A-5



**CINCINNATI STATE
TECHNICAL COLLEGE**

**CINCINNATI POLICE
DISTRICT FIVE**

**MT STORM
PARK**

**MT STORM PARK-SACRED HEART ACADEMY
HISTORIC DISTRICT**