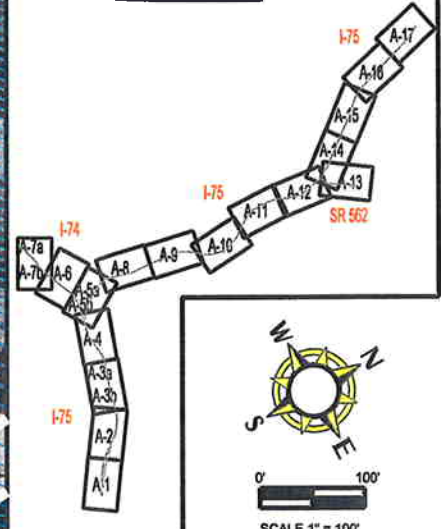




MILL CREEK EXPRESSWAY HAM-75-2.30 PID#76257

SHEET KEY



MAP LEGEND

- CONCEPTUAL ALTERNATIVE
- EXISTING RIGHT OF WAY
- CONSTRUCTION LIMITS
- RETAINING WALL
- EXISTING RAILROAD
- POTENTIAL NEW RAILROAD MAIN
- ELEC. TRANSMISSION TOWER
- FLOODWAY
- 100-YR FLOOD PLAIN
- PAST OR POTENTIAL LANDSLIDE
- HISTORIC DISTRICT
- POTENTIAL BUILDING DEMOLISHED
- PARK LAND
- RAMP CLOSED
- SCHOOL
- POLICE STATION



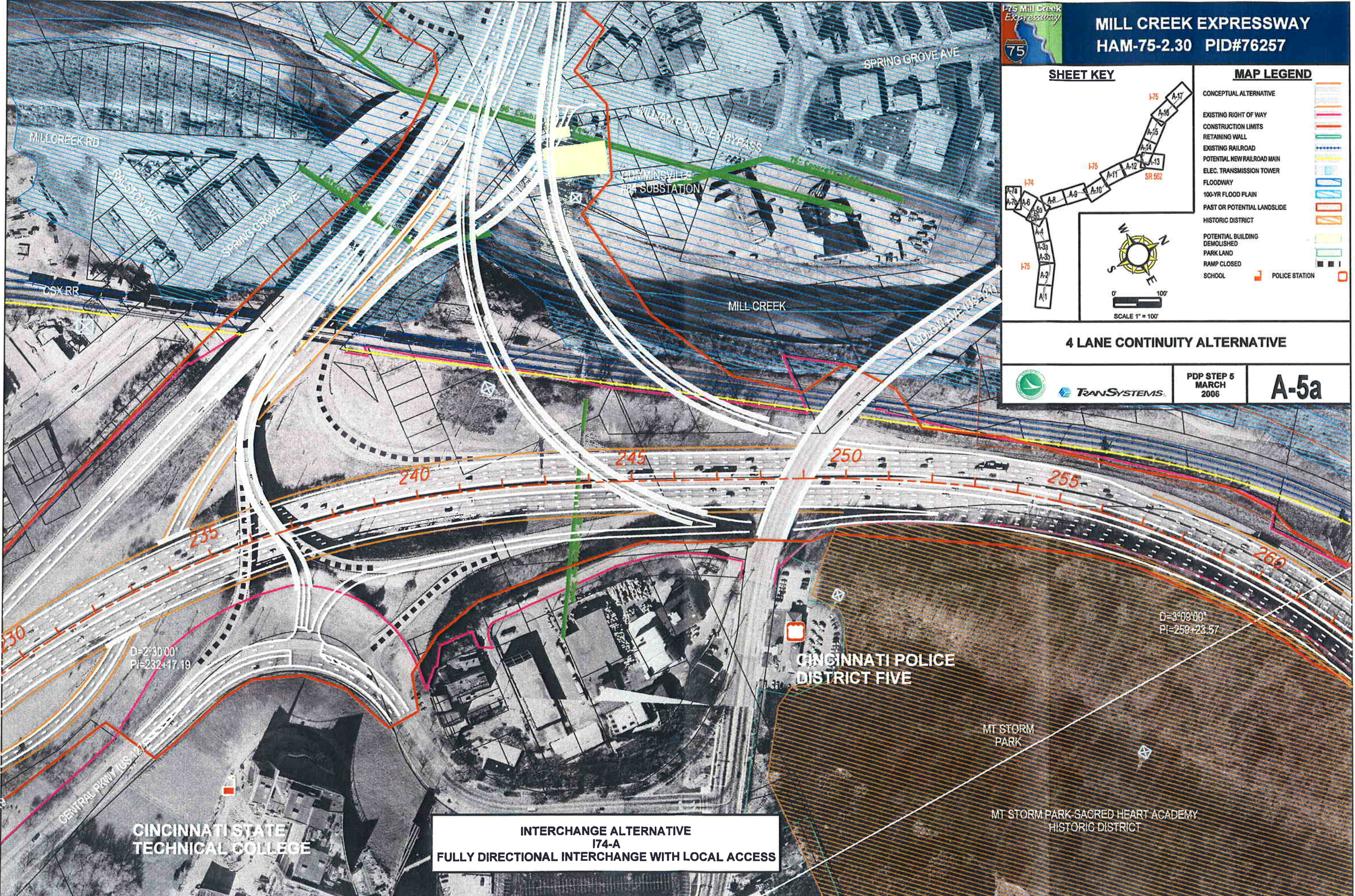
SCALE 1" = 100'

4 LANE CONTINUITY ALTERNATIVE



PDP STEP 5
MARCH 2006

A-5a



CINCINNATI STATE
TECHNICAL COLLEGE

**INTERCHANGE ALTERNATIVE
I74-A
FULLY DIRECTIONAL INTERCHANGE WITH LOCAL ACCESS**

CINCINNATI POLICE
DISTRICT FIVE

MT STORM
PARK

MT STORM PARK-SACRED HEART ACADEMY
HISTORIC DISTRICT

D=3°03'00"
PI=259+23.57

D=2°30'00"
PI=232+17.19